

\$3529(' % < 35(6,'(17¶6 &\$%,1(7
\$33529(' % < %25)5 * 29(51256



(DVWHUQ SURYLGHV DFFHVVLEOH DQG DIIRUGDEOH HGXFDWLRQ
DQG ~~ORQJ~~ OHDUQLQJ IRU WKH 3RWRPDF +LJKODQG

—

(DVWHUQ :HVW 9LUJLQLD &RPPXQLWHDQGFKHFKWLFHDSRWRPDF
WKURXJK D UDQJH RI LQQRYDWLYH SURJUDPV DQG VHUYLFHV
FRPPXQLWHDJH PLVVLRQ

,Q LWV LQVWLWXWLRQDO DWWLWXGHV SROLFLHV SUDFWLFHV
LV FRPPLWWHG WR VWXGHQW VFFHVV WK

‡ (GXFDWL DQ FHVJLEJUDSRIDFWLRQ RU GHOLYHU\ WKURXJK WH
WR UHVLGHQWV WKURXJKRXW WKH &ROOHJH V UHJLRQ RI

‡ 7KH &ROOHJH PDLQWDLQV DQ RSHQ GRRU DGPLVVLRQ SRO

‡ \$OO OHDUQHUV DUH DFFHSWDEOH WR ENDFRPIG GLYHUVH
SURYLGHG D QXUWXULQJ HQYLURQPHQW

‡ 6WXGHQW HUXSRHVSRUWXULW\ WKLHQJG\ LWXGHQW DQG
RULHQWDWLRQ DOWSRUWLMLRQRISRLQWLFHQDQWLGUDFWLRQ
LQLWLDO FRQWDFW ZLWK VWXGHQWV WKURXJK DFKLHYHPH

‡ \$FDGHPLF RIIHULQJWFXGHQWV DUHQDUNHLODWHG HGXFD
DQG WUDLQVSRQDZWK

‡ 7KH &ROOHJH FHOHEUDWHV DQG SURPRWHV OLIHORQJ OHDU
WKDW DUHDHOOHWXGWQR

‡ /HDURHOLQVWUXFFRJIHMUHQW OHDUQLQJ VW\OHV DQG
XVHDSURWHFRORJ\

‡ 7KH HVFRQWLQJRXQLQJ RXWFRPHV DVVHVPHQW LPSURY
GULFXGHHORSHQW UH WKDW WHDFKLQDQW KDUQLQ
TXDOLW\

:HVW 9LUJLQLD\$ & R/GM/V PRUWK SRZHUV GXWLHV DQG UHVSQRV
SXEOLFHKLXJFIDVWQWXWLRQLHVGWFKXPHQW HQXPBNDWCH WKR VH
UHVSQRVLELEOLWLHV WKDW WKH %RDUG RI *RYHUQRUV RI (DVW
WR UHWDIDQVRELVWIKDNRVGHVOHJDWH WR WKH 3UHVLGHQW RI W
UHVSQRVLELEOLWLHVWKHWRDUG RI *RYHUQRUV PDLQWDLQV FRQW
SRZHUV GXWLHV DQG UHVSQRVLELEOLWLHV WKBDDRSIHGDVLRD
LQVWLWXWLRQ DQG UHIOHFW WKH LPSOHPHQWDWLRQ RI SROLF

7KH %RDYGHUQRUV RI (DVWHUQ :HVW 9LUJLQLD &RPPXQLW\ DQ
SRZHUVGXWLHV

‡ 'HWHUPLQLQJ DQG FRQWUROOHQJFKWLRQDQFLDO EXVLQ

, Q D G G L W R L R Q H U F L V L Q J W K H D E R Y H G H S H W W W W G W B X I W 3 K U H U L L G H Q W K

‡ 6 K D O O F R Q W L Q X H W R E U L Q J W R V W B R M U % S R D U G F D O O P D W W H U

‡ 6 K D O O F R Q W L R X D G Y L V H W K H % R D U G R I D O O P D W W Z H U F K Q R W V S
D V D P D W W H U R I V R X Q G P D Q D J H P H Q W S U D F W Q L F H V K R X O G

‡ 6 K D O O F R Q W L Q X S H U W G B S W D F M L G R I S X D O O U R Y L G H W L O B K R W K H U
V X S S R U W D V P D \ E H Q H F H V V D X F F R V S B I O O Q Q B Q J D R Q G W K H U % W

‡ 6 K D O O Z R U N Z L W K W K H % R D U G

,Q RUGHU WR IXOILOO W W K H % & B O G H K D I V V D F X W W K R L R I Q H G W K H 3 U H V L
D G P L Q L V W U D W L Y H V W U X F W X U H R X W K D W V S U R K P R W H J D Q H P D G W H L R V K I D S
D F F R X Q W D E L O L W \ I R U O H D U Q L Q J R X W F R P H V D Q G L Q V W L W X W L F
3 U H V L G H Q W V S H F L I L F S R Z H U V D Q G G X W L H V W K D W H Q D E O H W K
& R O O S H J M F R H Q H U V W R Q H R I W K H & R O O W K H V % R D P L G K D W U S U R I P X H
D S R V L W L R Q G H Q J F W K S H W G R Q H R X D W O H G Q U H V S R Q V L E L O L W L H V 6 H F
/ L N H Z L V H W K H 3 U H V L G H Q W K D V D V V H P E O H G D 3 U H W K C H W Q Y L V y 8

3URPRWH FXUULFXODU GHYHORS PHQW DQG FKDQJH Q&SOM
DQG QRQFUHGLW FRPPXQLW\ DQG FRQWLQXLQJ HGXFDWLRC
WKH QHHGV DQG LQWHUHVVV RI VWXGHQWV HPSOR\HUV
D /HDGLQJ WKH &ROOHJH WR DFKLHYH WKH VWDQGDUG

J \$VVHVVLQJ WKH YLDELQW\ DGHTXDF\ DQG QHFHV
DQG FRQLQXDWLRQ DV LW UHODWHV WR WKH &RP
K (QVXULQJ WKDW WKH LQVXWURIF DQG DLYD SOBJUDPV
VWXGHQWV PD\ FRPSOHWH SURJUDPV LQ D QRUPDO
L +HDULQJ VWXGHQW DSSHDOV ZKHQ DSSURSULDWH

5HSUHVHQW WKH &ROOHJH WRUDVSRQLWV DQERQLWLV
D \$GYRFDWLQJ WKH QHHGV RI WKH &ROOHJH WR DSSU
E 'LUHFWLQJ WKH PDUNHWLQJ DQG SXEOLF UHODWLRQ
F (QFRXUDJH DPLW\ DQG XQLW\ RWKHU DGRPLQ DPAQDPI
VWXGHQWV DOXPQL DQG RWKHU LQWHUQDO FRQV

6XSSRUW WKH %RDUG LQ DFKLHYLQJ LWV VWDWXWRU\ UHVS
D %ULQLQJ WR WKH %RDUG DORFDWVWHUV UHTXLUHG
E \$GYLVLQJ WKH %RDUG RQ DOO PDWWHUV QRW VSHF
VRXQG PDQDJHPHQW SUDFWLFH VKRXOG EH EURXJK
F 3URYLGLQJ DSSURSULDWH QRWLFHV RI SXEOLFV
SODQLQJ DQG IRU WKH VXFFHVVIXO RSHUDWLRQV

\$V WKH FKLHI VWXGHQW GHYHORS PHQW RIILFHU WKH 'HDQ RI 6
LPSOHPHQWDWLRQ RI V\ VWHPV WR VXSSRUW VWXGHQW DFFHVV
SHUVRQD, Q D G L W L R Q R U G L Q D W L Q X W L R Q D O U H S R U W L Q J D Q G U H

- ‡ 6XSHUYLVH WKH RUJDQL]DWLRQ DQG LPSOHPHQWDWLRQ R
WXWRULQJ D G L W L R Q R U G L Q D W L Q X W L R Q D O U H S R U W L Q J D Q G U H
- ‡ 'LUHFW SURJUDPV WKDW GHYHORS VWXGHQW OHDGHUVKLS
- ‡ 0DLQWDLQ V\ VWHPV WKDW IDFLOLWDWH DFFXUDWH DQG W
FUHGLW DVVHVVP HQW V\ VWHPV
- ‡ \$VVHVVP HQW RI SULRU OHDUQLQJ
- ‡ 6XSHUYLVH WKH ILQDQFLDO DLG SURJUDP LQFOXGLQJ SU
- ‡ 6XSHUYLVH PDUNHWLQJ DFWLYLWLHV RI WKH &ROOHJH
- ‡ 'LUHFW WKH GHYHORS PHQW RI SXEOLFNDWLRQD VOIRJ V W X S K
- ‡ 2YHUVHH WKH WLP HOLQHVV DQG DFFXUDF\ RI UHTXLUH G L
FROOHFWLRQ RI GDWD DQG H[WHUQDO VXUYH\
- ‡ 6XSHUYLVH SUHSDUDWLRQ RI DOO ILQDQFLDQ D D L G V U H I S B R E D
HYDOXDWLRQV
- ‡ 5HSUHVHQW WKH &ROOHJH RQ WKH +(3& 'DWD \$GYLVRU\ &
RIILFHUV DQG RWKHU VWDWH PHHWLQJV DV QHFHVVDU\
- ‡ :RUN ZLWK WKH 'HDQ RI 7HDFKLQJ D Q G L M D U Q L Q J H P Q W W K
WR GHYHORS SURPRWH DQG UHFUXILRQ V W X S K F R X U F O L H Q
WUDLQLQJ SURJUDPV
- ‡ &RRUGLQDWH DOO FXUULFXOXP DJUHHPHQWV ZLWK RWKHU
HQWUDQFH DQG EURNHUHG FRXUVHV SURJUDPV
- ‡ 3URYLGH OHDGHUVKLS WR SURPRWH WKH FROOHJH V ZHO
- ‡ 3HUIRUP RWKHU GXWLHV DV DVVLJQH G E\ WKH 3UHVLGHQV
- ‡ 6HUYHV DW WKH :LOO DQG 3OHDXUH RI WKH 3UHVLGHQV
- ‡ 3UDFWLFHV DQ Q D G L W L R Q R U G L Q D W L Q X W L R Q D O U H S R U W L Q J D Q G U H
- ‡

‡ &RRUGLQDWXIDODUFXHURHGXV ZLWK RWKHU HGXFDWLRQDO
HGWUDQFH DQG EURNHUHG FRXUVHV SURJUDPV

‡

\$V WKH FKLHI ZRUNIRUFH HGXFDWLRQ DQG FRP RQIPW QSWU WQJH
3DUWQHUVKLSV LV UHVSQRVLEOH WR WKH 3UHVLGHQW IRU WKH
VSRQRPXUJGLWH LQEVWHU EWLQRQDO SURJUDPV DQG VHUYLFHVRLQDO XSD
ORQJ OHDUQLQJ LQFOXGLQJ WKH IROORZLQJ VSHFLILF GXWLHV

‡ 5HVSORRUYEHUWMKHHQJDQDJHPHQW DQG PRQLWRULQJ F
ZRUNIRUFH HGXFDWLRQ

‡ 'LUHHPVSOR\SPURQVHRUWHXOVDLQVWU XSHWVRQDHO
LQFOXGLQJ UHFRPPHQGLQJ WR WKH 3UHVLGHQW VSH
FRQGLWLRQV RI IDFXOW\ VWDII

‡ /HDVGHYHORSFPHDQRUHQWUWVSRQURDPUHD
HPSOR\HURWJDOEEDFRQJLHQFLHV

‡ &RRUGLQDWH DQGDVDFGOVWDDWHVHFWRU

‡ 'HYHORS DQG UHVLVH ZRUNIRUFH FRXUVHV DQG VHUYL
OHDDQLJHFRPPHQGDWHVSRORHUV

‡)DFLOLWSDWRPDLFKHDQGV 'LVWU(LFRQBRQV RUYHLOKPSPHO
&RPPLWVFRHQFBRRQVCHQVLYHUVLWVFKQLFDO
FHQWHVPSORHQBPHYHORSPHQW SURIHVVLRQDOV F
IDFLDQVWUWISQJLGHUV

‡ 'HYHORSPSOHPHQWWLWVXDRQDRUAPXQLW\
DQG FRQVGLXFDLQJ

‡

‡ & R P P X Q L D D P R R U G I Z Q D K L R C B X X M D S U H S U H Q H X U V K L S
D Q G R Q R P L F ' H Y H O R S E P D W Y H V
‡ 5 H S U H W I R O W D S W H D G H U Y L F W U L F W

9LUJLQLD &RPPXQLW\ DQG 7HFKQLFDO &ROOHJH)RXQGD
 F RUJDQLJDWLRQ

< 2YHUVHH WKH &ROOHJH¶V UHODWLRQVKLS ZLWK WKH :H
 &HQWHU

< &ROODERUDWH ZLWK :RQIRHDFH R G X F D W K L R Q J D Q G W H D U C
 GHOLYHU\ RI F U H G L W D L Q G W R X F W L R Q W K U R X J K R X W W K H

< 'HYHORS DORQJ ZLWK WKH)RXQGDWLRQ DQG WKH 3UH
 VROLFLW JLIWV

< 3URYLGH OHDGHUVKLS Q B Q G D Q W H Z D U X G W K H S U R U S S D W L R Q
 LPSOHPHQWLQJ VWHZDUGVKLS VWUDWHJLHV

< 5HVHDFK VRXUFHV RI IXQGV IRU LQGLYLGXDO JLYLQJ
 FRUSRUDWH UHVVRXUFHV

< &RRUGLQDWH WKH ZRUN RI WKH)R X Q G D W L R Q H % R D U G R

< &RPPXQLFDWH ZLWK G W Q W & R F O B J H R D U E Q B U H V I D G H Q W ¶ V
 VWDII WR LGHQWLI\ SULRULWLHV DQG LQLWLDWLYHV W
 (GXFDWLRQDO)RXQGDWLRQ HIIRUWV

< &RQWULEXWH WKRXJK WUXO O D H D I G H Q V K L L S Q W R L W K H V L R Q D C
 WKH VXFFHVVIXO LPSOHPHQWDWLRQ D Q G & R O S R V H I V P L V L

< 3HUIRUP RWKHU GXWLHV DVVLJQHGE\ WKH 3UHVLGHQW

< 6HUYHV DV W K H B : L Q C H D Q G B K H 3 U H V L G H Q W

< 3UDFWLFHV X Q L (Q W O H S G M B W

< 6HUYHV DV D YDOXHGH PHPEHU RI WKH 3UHVLGHQW¶V & D

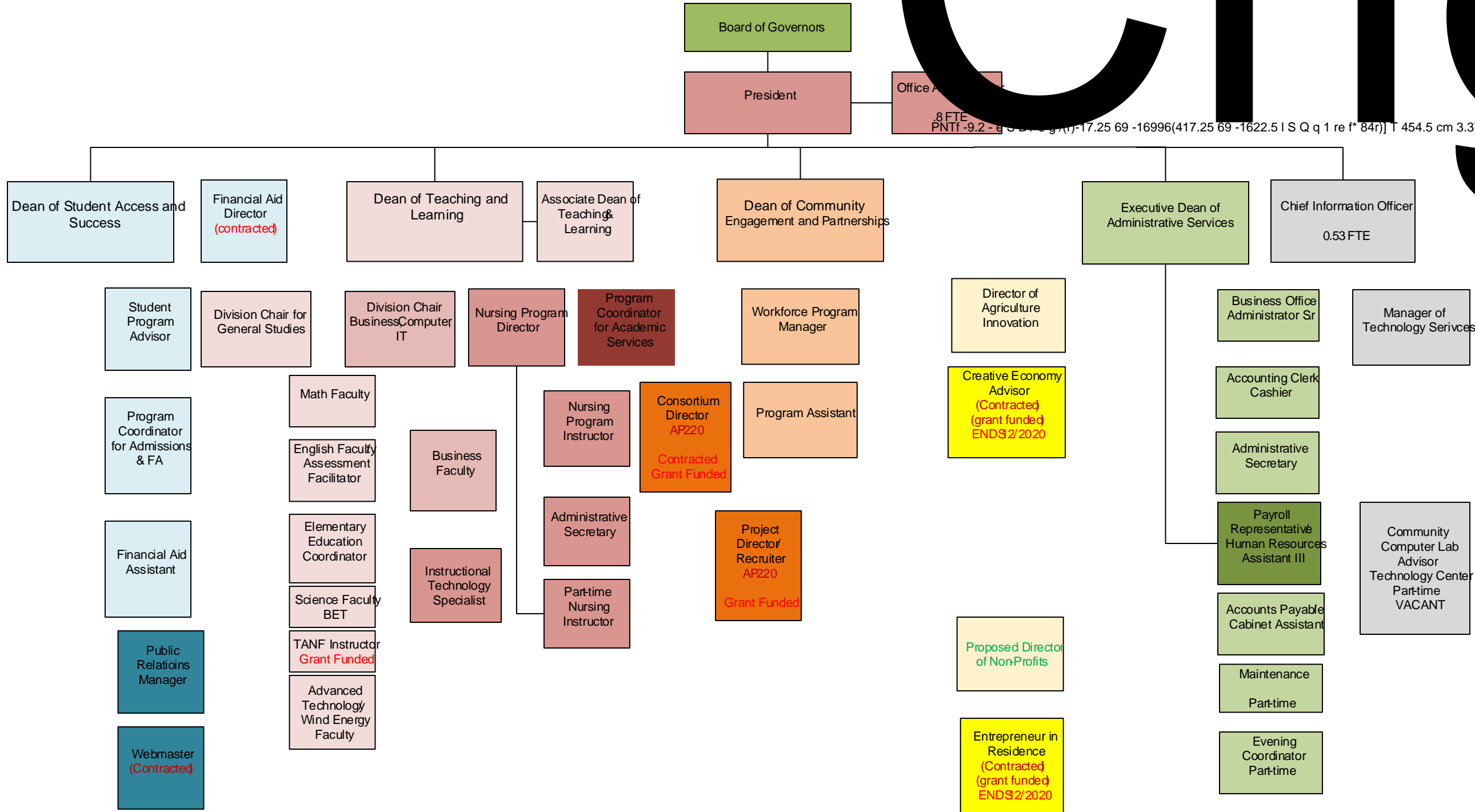
‡

Student Support Services	Academic Services	Workforce Education	Advancement and Innovation	Administrative Services	Information Systems and Technology
<ul style="list-style-type: none"> { Organize support such as: <ul style="list-style-type: none"> o Orientation o Advising o Counseling o Career planning { Direct programs which develop student leadership { Maintain student systems <ul style="list-style-type: none"> o Admissions o Registration o Records { Supervise student financial aid program, reports, and compliance { Develop and implement student data collection and reporting processes { Assist the president with accreditation 	<ul style="list-style-type: none"> { Develop academic programs, courses, and services { Coordinate curriculum agreements with other educational providers { Direct utilization of instructional technologies { Oversee access to and utilization of learning resources { Supervise faculty and instructional personnel 	<ul style="list-style-type: none"> { Lead development of credit and non credit training programs { Coordinate development of entrepreneurship training and services { Direct services targeted at workforce development { Supervise training delivery personnel { Assess effectiveness of training programs and services { Implement and disseminate workforce education policies 	<ul style="list-style-type: none"> ◁ Develop and implement an institutional plan to support College and district community advancement initiatives. ◁ Provide college wide support in researching, planning, budgeting, writing/editing and preparing grant applications. ◁ Assist with ensuring regulatory compliance. ◁ Supervise the administration of 	<ul style="list-style-type: none"> { Supervise internal administrative operations { Coordinate internal monitoring of strategic, compact, and master planning processes { Assist the President with accreditation 	

<ul style="list-style-type: none"> processes and implementation { Liaison with learners { Liaison with secondary schools, vocational centers, and other colleges 	<ul style="list-style-type: none"> { Implement and disseminate academic policies { Assist the president with accreditation processes and implementation { Liaison with secondary schools, vocational centers, and other colleges { Lead assessment of students, courses, and programs { Develop and implement data collection and reporting processes 	<ul style="list-style-type: none"> { Deliver continuing and community education { Liaison with employers, area businesses, and economic development professionals { Develop and implement data collecting and reporting processes 	<ul style="list-style-type: none"> < agricultural innovation Leadership, communication, and coordination with Institute of Rural Economic Entrepreneurship and Economic Development initiatives < Collaborate with Dean of Teaching and Learning and the Dean of Student Access and Success to provide guidance and leadership with the WV Invests grants to eligible Eastern students. < Develop and communicate the Case for support of philanthropic funding in support of designated college and student priorities. 	<ul style="list-style-type: none"> budgeting and auditing processes { Guide the investment of resources { Administer the purchasing program { Maintain inventory of College and State property { Plan for and administer all facilities and facility agreements { Assist the President with human resources administration { Assist the President with non-discrimination, equal opportunity, and legal compliance 	<ul style="list-style-type: none"> { Develop and implement data collection and reporting processes
---------------------------------------------------------------------------------------------------------------------------------------------------------------------------------------------------	----------------------------------------------------------------------------------------------------------------------------------------------------------------------------------------------------------------------------------------------------------------------------------------------------------------------------------------------------------------------------------------------------------	--------------------------------------------------------------------------------------------------------------------------------------------------------------------------------------------------------------------------------------------------------------------	--------------------------------------------------------------------------------------------------------------------------------------------------------------------------------------------------------------------------------------------------------------------------------------------------------------------------------------------------------------------------------------------------------------------------------------------------------------------------------------------------------------------------------------------------------------------	-----------------------------------------------------------------------------------------------------------------------------------------------------------------------------------------------------------------------------------------------------------------------------------------------------------------------------------------------------------------------------------------------------------------------------------------------------------------------------------------	-------------------------------------------------------------------------------------------------------------------

			<ul style="list-style-type: none"> ◁ Coordinate the work of the Foundation Board of Trustees and its committees. 		
{	{	{	<ul style="list-style-type: none"> ◁ Community Engagement and Partnerships 	{	{

EASTERN WV COMMUNITY AND TECHNICAL COLLEGE ORGANIZATIONAL CHART



7K BG PLQLVWUDWLYH VWUXFWXUH LV FRPSULVHG RI RSHUDW
PLVVLQR RI WKH &ROOHJH 7KHVH WHDPV DUH DFRXQWDEOH
LQVWLWXWLRQDO JRDOV 7KH RSHUDWLRQV SODIWHG ERFH QVH RQ
&ROOHJH 0LVVLQR DQG RU RQ WKH DG PLQLVWUDWLYH V\VVH

7KH 3UHV LGHQW V &DELQHW DGYLVHV DQG DVVLVWV WKH 3U
SODQQQLQJ EXSRQW ERFH QVH RQ DQGLRQ RI WKH &ROOHJH V DFWLRQ
&DELQHW DUH WKH H[FXWLYH RIILFHUV ZKR OHDG HDFK RI V
DG PLQLVWUDWLYH VHUYLFHV VWXGHQW VXSSRUW VHUYLFHV
HGXLWLRQ LQIRUPDWLRQ V\VWHPV DQG WHFKQRORJ\ DQG ILC
UHJXODUO\ ZLWK WKH 3UHV LGHQW WR UHSRUW UHYLHZ DQG
UHVRXUFHV WR DFKLHYH WKH &ROOHJH DQ &RDOV HQG V\WKHP &R
9LUJLQLD V 0DVVHU 3ODQ

7KH JRYHUQDQFH WHDPV /H DUQHU 2XWFRPHV 7HDP >/27@ DC
DUH FURVV IXQFWLRQDO DQG LQWHUGHS DUWPHQWDO WHDPV
UHFRRPHQGDWLRQV V\XGHQW OHDUQLQJ SROLF\ DQG FROOH

:LWKLQ HDFK RI WKH IXQFWLRQDO DUHDV RI WKH DG PLQLVWU
UHVSRQVLELOLWLHV IRU UHVSHFWLYH GLPHQVLRQWLRVHWKH &
VHUYLFHV VWXGHQW VXSSRUW VHUYLFHV DFDGHPLF VHUYLFH
LQIRUPDWLRQ V\VWHPV DQG WHFKQRORJ\ DQG ILQDQFH DQG
HVWDEOLVKHG LQVWLWXWLRQDO JRYHUQDQGV DQG SROLFHV V\WKHP &R

‡

1DPH ,QVWLWXWLRQDQ7(IHFWLYHQHV 7HDP

3XUSRVHR UHYLHZ SURSRVHG SROLFLHV DQG UHJXODWLRQ
RQ UHFRPPHQGHG GUDIWV WKDW

‡ (VWDEOLVK RXWFRPHV IRU LQVWLWXWLRQDO HIIH
‡ *XLGH GHYHORSRPHQW RI DGPLQLVWUDWLYH RSHU

0HPHUVKLS ([HFXWLYH 'HDQ RI \$GPLQLVWUDWLYH 6HUY

‡ &KLHI ,QIRUPDWLRQ 2IILFHU

‡ \$ UHSUHVHQWDWLYH RI WKH 6WXGHQW
DQQXDOO\ E\ WKH 'HDQ RI 6WXGHQW \$F

‡ \$ UHSUHVHQWDWLYH RI :RUNIRUFH (GXF
DQO\ E\ WKH 'HDQ RI &RPPXQLW\ (QJD
3DUWQHUVKLSV

‡ \$ UHSUHVHQWDWLYH RI \$GPLQLVWUDWL
DQQXDOO\ E\ WKH ([HFXWLYH 'HDQ RI \$

‡ 2QHPSOR\HH VHOHFWHGDDQO\O

‡ 2QH XDPH IDFRDMU VHOHFWHG DQQXDO
)DFXOW\ \$VVHPEO\

‡ \$ UHSUHVHQWDWLYH RI \$GYDQFHPHQW

